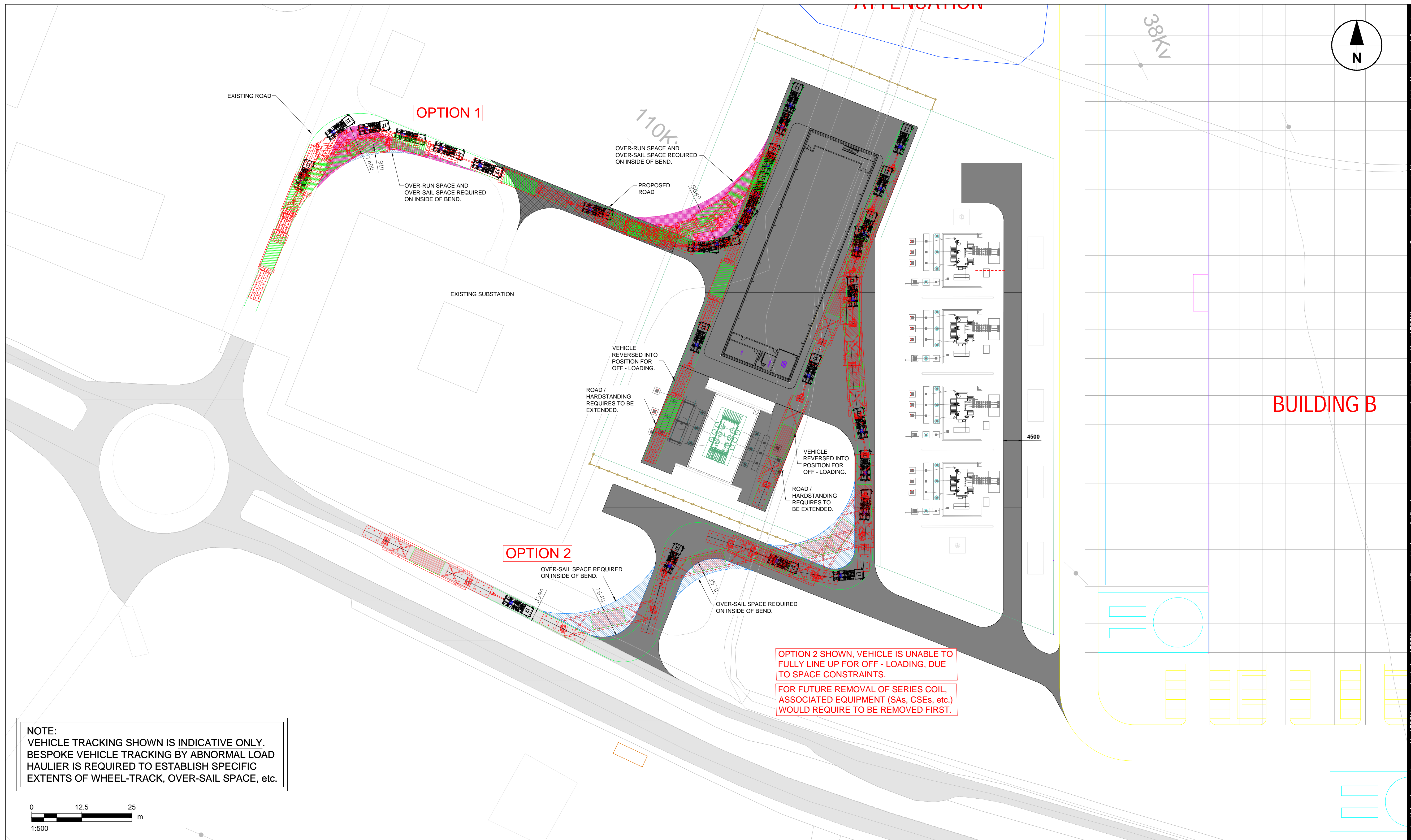
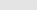
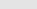





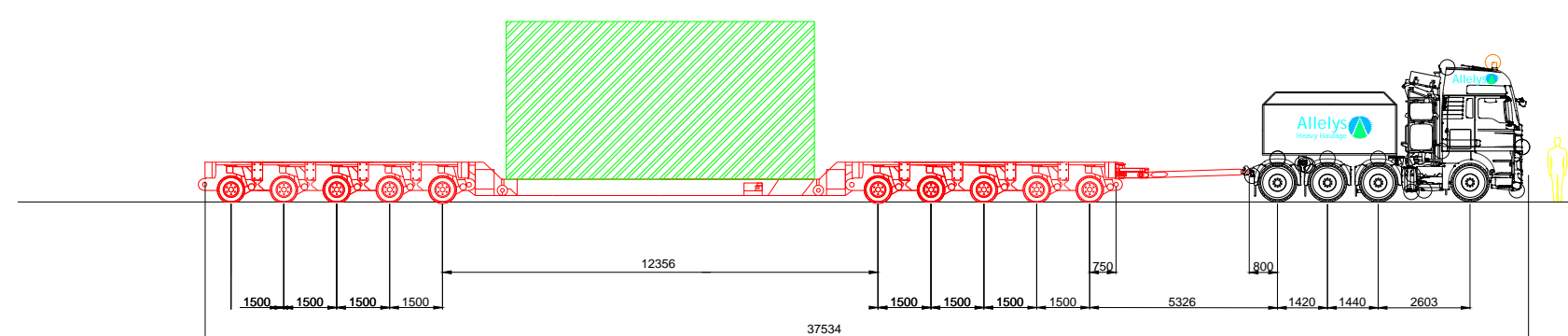
- DRAWINGS ARE INDICATIVE ONLY AND SHOULD NOT BE USED FOR DETAILED DESIGN;
- THE EIRGRID SUBSTATION IS BASED ON THE LATEST EIRGRID STANDARD (01-09-2020) AND IS SUBJECT TO CHANGE BY EIRGRID. DRAWING REFERENCE XDN-LAY-ELV-STND-F004;
- THE EQUIPMENT LAYOUTS ARE INDICATIVE AND DIMENSIONS MAY CHANGE ONCE THE EXACT SPECIFICATIONS ARE DETERMINED;
- CABLE ROUTES ARE INDICATIVE AND MAY CHANGE ONCE THE EXACT LAYOUT IS DETERMINED.

[illegible]

KEY

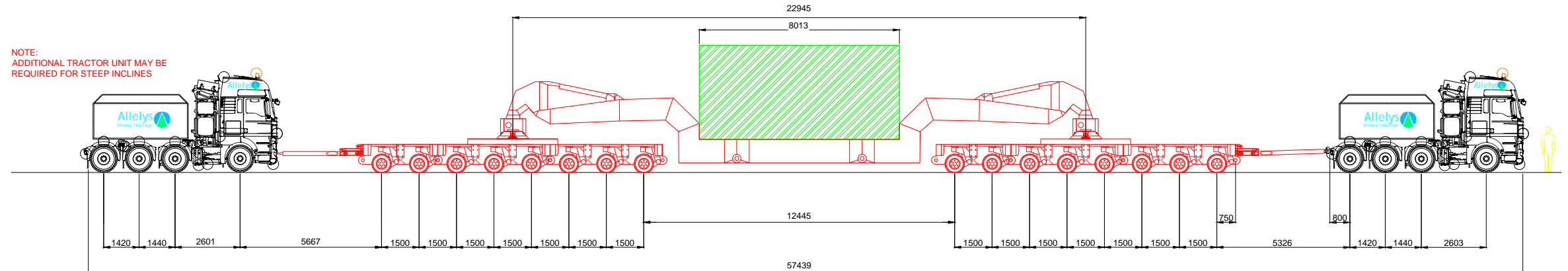
-  EXISTING PUBLIC ROAD
 PROPOSED PERMANENT ROAD
 APPROXIMATE WHEEL TRACK OF VEHICLE
 OVER-SAIL SPACE REQUIRED FOR AIL
 OVER-RUN SPACE REQUIRED FOR AIL

SPECIFIC DELIVERY VEHICLE TO BE DETERMINED BY AIL CONSULTANT



OPTION 1 VEHICLE CONFIGURATION - 10 AXLE (5-BED-5) MODULAR TRAILER

NOTE:
ADDITIONAL TRACTOR UNIT MAY
REQUIRED FOR STEEP INCLINES



OPTION 2 VEHICLE CONFIGURATION - 16 AXLE GIRDER TRAILER